

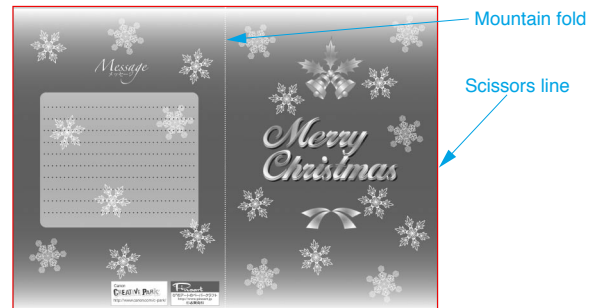


Assemble the card

Use pattern: Page2 / Page3.

① Cut out A1 by cutting along the lines.

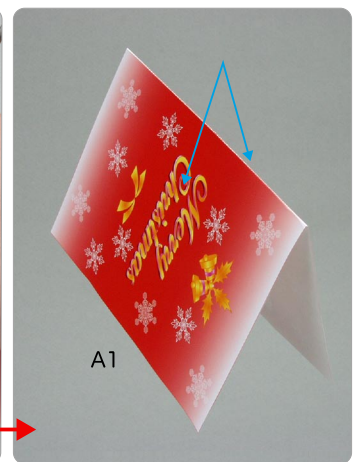
★ Cut along the line marked ———.



A1Card ← Parts No. / Parts name

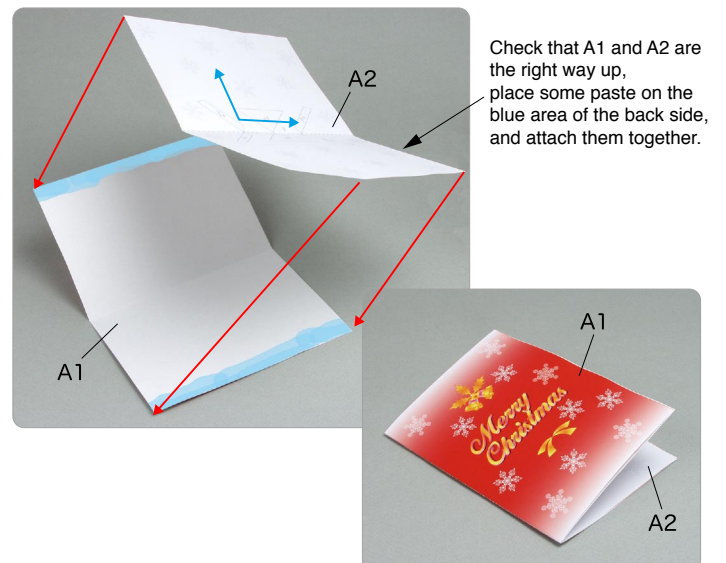
② Make a mountain fold on A1.

★ Trace along the mountain fold line with a stencil pen, scoring it to make it easier to fold.



③ Attach A1 and A2, and the card is complete.

★ Using the photo as a guide, attach in the direction of the arrow.



Tools

Scissors

Paste, or woodwork glue

Stencil pen, or bodkin

Ruler

Notation Key

———— Scissors line

..... Mountain fold

— · — · — Valley fold



Glue spot

A1, B1

Parts No.

+A1, +B1

Numbers of parts to be attached

- ◆ The Assembly instructions are divided into two blocks:
A (card) and B (wreath).
Follow the instructions for each block to assemble your card.

<Caution>

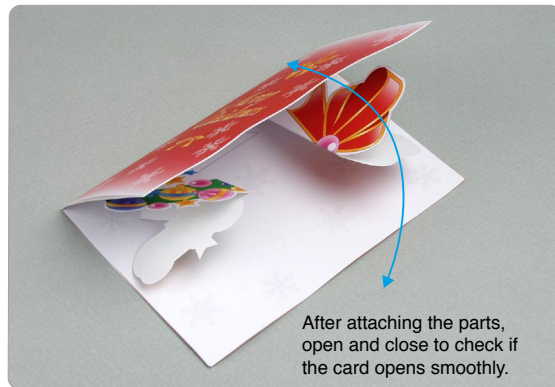
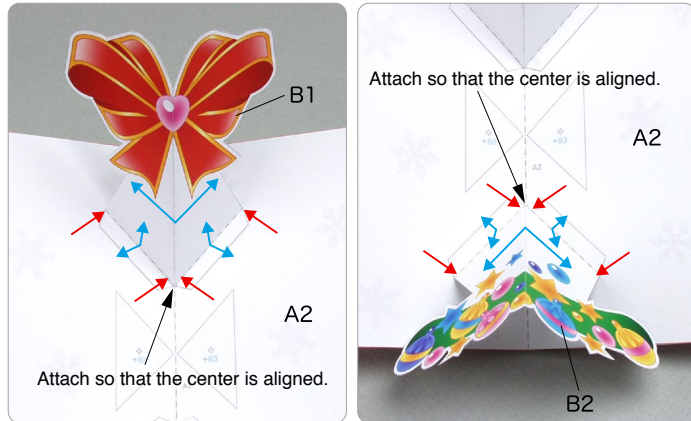
- ✂ Keep scissors and glue away from small children.
- ✂ Be careful not to cut your fingers when using scissors.

B Assemble the wreath

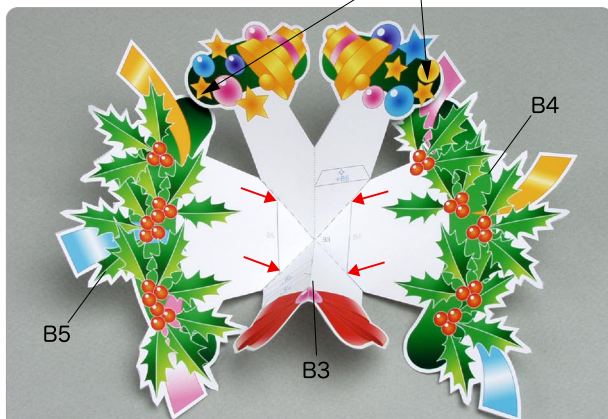
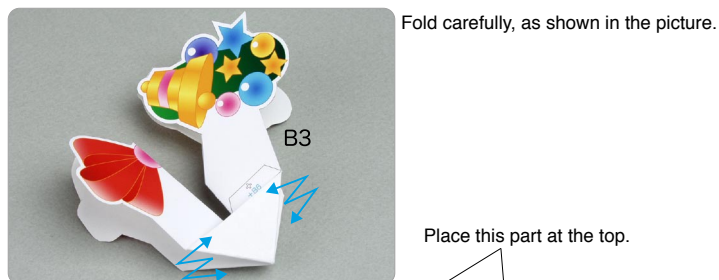
Use pattern: Page4 to Page6.

① Attach B1 and B2 to the card.

★ After attaching the parts, open and close to check if the card opens smoothly.



② Attach B4 and B5 to B3.



③ Attach B6 to B3, and attach B7 and B8 to them.



④ Attach B9 to the wreath, and attach B10 to them.



⑤ Attach the wreath to the card, and your card is complete!

